

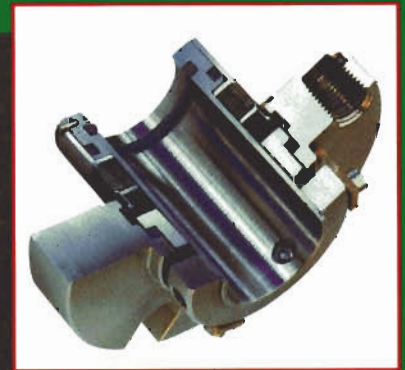
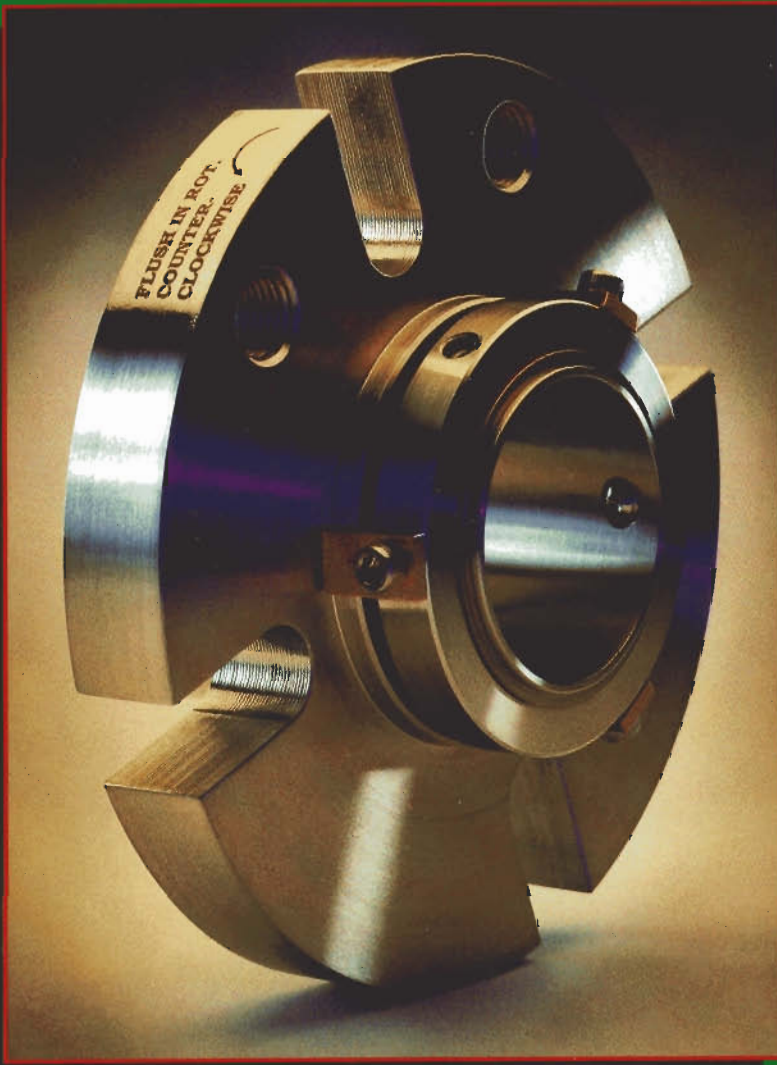


PPC

MECHANICAL SEALS

UltraSeal

151



**Metal Bellows
Cartridge Seal**



*Solutions to Mechanical
Seal Problems*

THROUGH CREATIVE ENGINEERING AND EXPERT TECHNICAL SERVICE



UltraSeal 151

METAL BELLOWS CARTRIDGE SEAL

A universal precision seal for handling a wide range of services.

Design Advantages:

FAST, EASY INSTALLATION

Eliminates failure due to improper installation. Simply slide the preset UltraSeal 151 onto the shaft, then tighten the gland bolts and drive collar set screws. Remove the brass spacer clips and connect the flush line.

UNIVERSAL APPLICATION

Low-profile design of the UltraSeal 151 bellows allows it to fit virtually any pump (especially ANSI) without any modification of the stuffing box. Because of its universal adaptability, a substantial reduction in personnel training and inventory requirements is achieved.

HANDLES MANY SERVICES

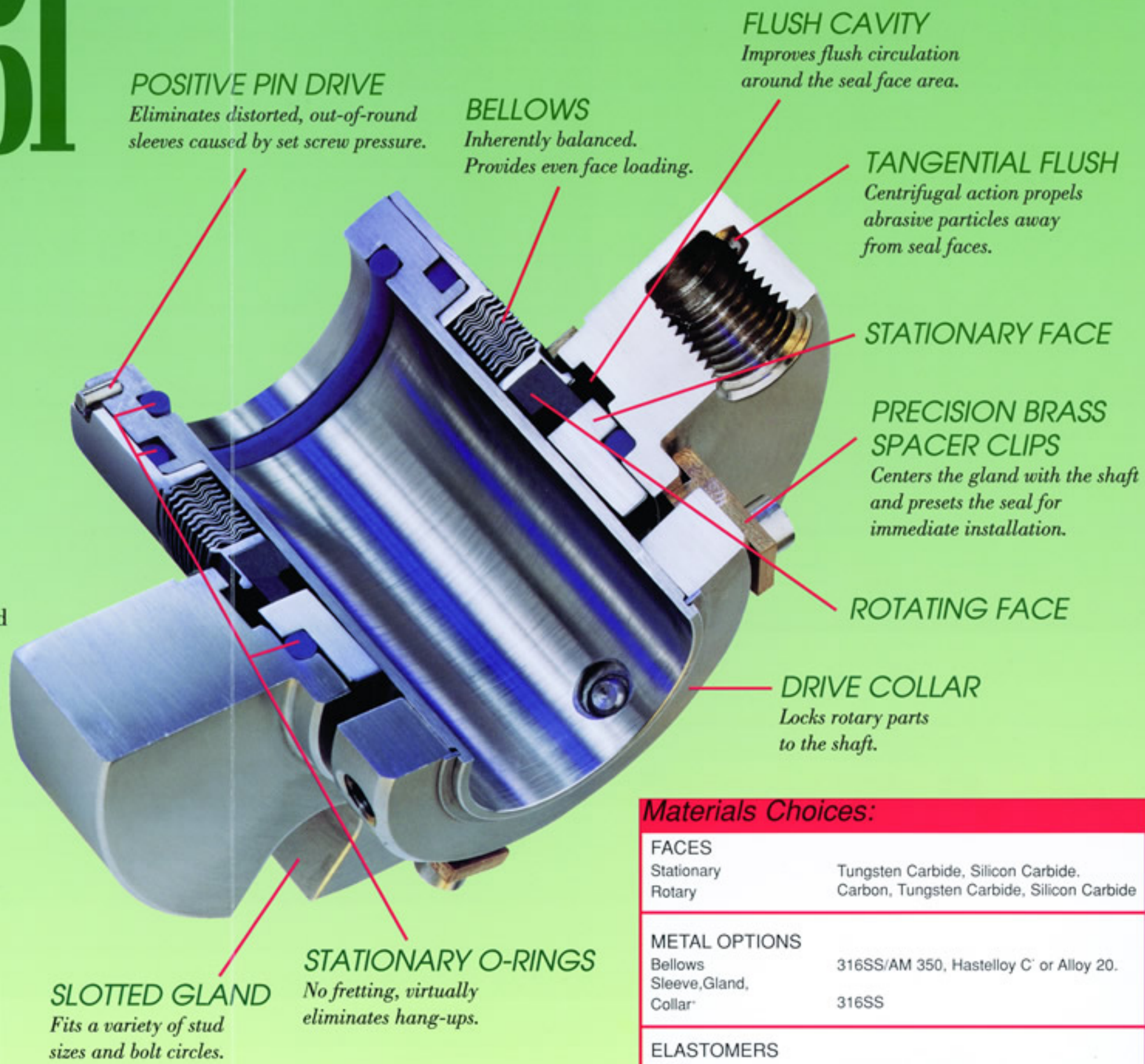
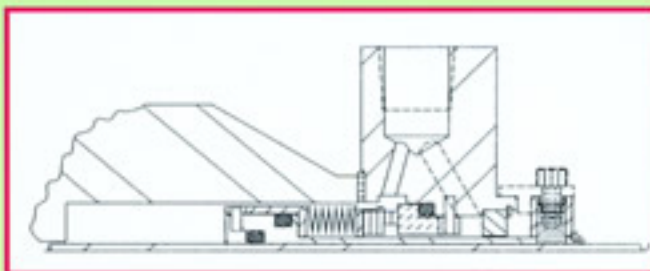
The UltraSeal 151 is designed to handle temperatures of up to 450°F and pressures up to 300 p.s.i. The 151's centrifugal, self-cleaning action of the bellows minimizes clogging, thereby enabling it to handle the toughest service requirements including slurries and other processes in which solids are present.

LOW REPAIR COST

Repair of the UltraSeal 151 requires only replacement of the O-rings, set screws and carbon seal face (hard faces such as Tungsten are relapped). Other parts are cleaned, inspected, then tested to insure "like new" performance.

OPTIONAL SAFETY FEATURE

An optional gland bushing with vent and drain is available to help prevent fumes and vapors from entering the atmosphere in the event of a seal failure.



POSITIVE PIN DRIVE

Eliminates distorted, out-of-round sleeves caused by set screw pressure.

BELLOWS

Inherently balanced. Provides even face loading.

FLUSH CAVITY

Improves flush circulation around the seal face area.

TANGENTIAL FLUSH

Centrifugal action propels abrasive particles away from seal faces.

STATIONARY FACE

PRECISION BRASS SPACER CLIPS

Centers the gland with the shaft and presets the seal for immediate installation.

ROTATING FACE

DRIVE COLLAR

Locks rotary parts to the shaft.

STATIONARY O-RINGS

No fretting, virtually eliminates hang-ups.

SLOTTED GLAND

Fits a variety of stud sizes and bolt circles.

Materials Choices:

FACES

Stationary
Rotary

Tungsten Carbide, Silicon Carbide,
Carbon, Tungsten Carbide, Silicon Carbide

METAL OPTIONS

Bellows
Sleeve, Gland,
Collar*

316SS/AM 350, Hastelloy C[†] or Alloy 20.
316SS

ELASTOMERS

O-Rings

Ethylene Propylene,
Fluoro and Perfluoroelastomers

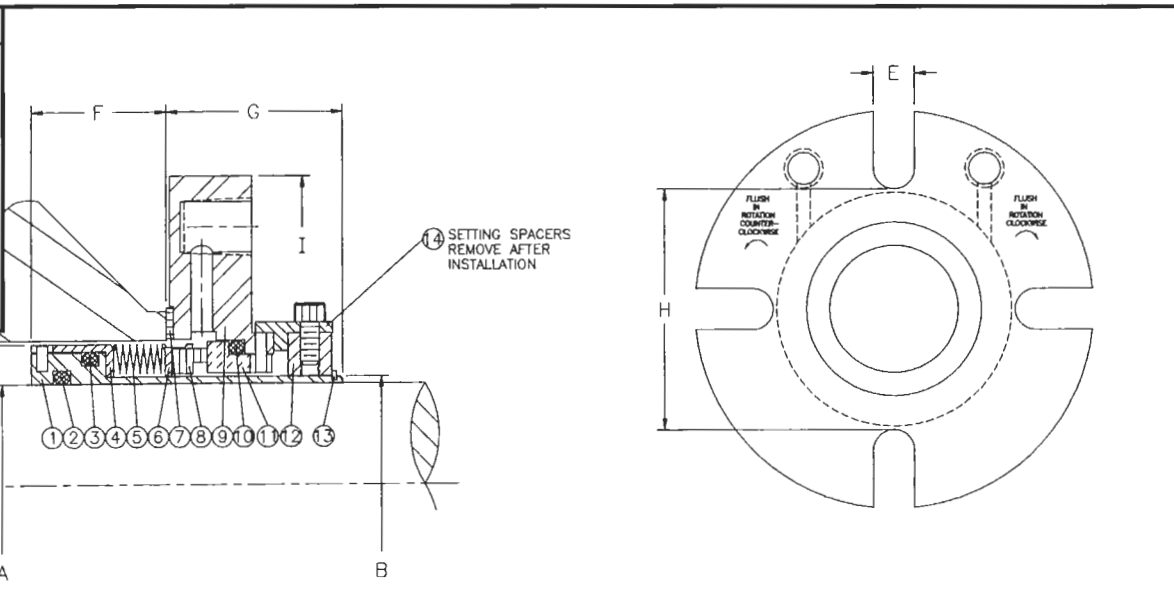
*Hastelloy-C or Alloy 20 available only with optional safety feature.
†Haynes International, Inc. T.M.



UltraSeal 151

METAL BELLOWS CARTRIDGE SEAL

ITEM	DESCRIPTION
1	SLEEVE
2	O-RING
3	O-RING
4	BELLOWS COLLAR
5	BELLOWS
6	INSERT HOLDER
7	GASKET
8	INSERT
9	GLAND
10	O-RING
11	SEAT
12	COLLAR
13	SPIROLOX
14	SETTING SPACERS



Shaft or Sleeve Diam.

A	B	C	D(Min.)	D(Max)	E	F	G	H	I(Max.)
1.000	1.125	1.688	1.750	2.010	0.438	1.094	1.531	2.312	4.110
1.125	1.250	1.688	1.750	2.040	0.438	1.062	1.531	2.438	4.240
1.250	1.375	1.938	2.000	2.270	0.562	1.125	1.531	2.688	4.360
1.375	1.500	1.938	2.000	2.430	0.562	1.125	1.531	2.812	4.360
1.500	1.625	2.188	2.250	2.630	0.562	1.125	1.531	2.938	4.980
1.625	1.750	2.312	2.375	2.690	0.562	1.125	1.531	3.062	4.990
1.750	1.875	2.438	2.500	2.810	0.562	1.188	1.531	3.188	5.480
1.875	2.000	2.562	2.625	2.940	0.562	1.188	1.531	3.312	5.480
2.000	2.125	2.688	2.750	3.190	0.562	1.188	1.531	3.438	5.490
2.125	2.250	2.812	2.875	3.440	0.688	1.250	1.594	3.812	5.990
2.250	2.375	2.938	3.000	3.560	0.688	1.250	1.594	3.938	6.240
2.375	2.500	3.188	3.250	3.590	0.688	1.250	1.594	4.062	6.240
2.500	2.625	3.312	3.375	3.810	0.688	1.312	1.656	4.188	6.480
2.625	2.750	3.438	3.500	4.070	0.688	1.312	1.656	4.750	7.620
2.750	2.875	3.625	3.688	4.190	0.688	1.375	1.719	4.875	7.745
2.875	3.000	3.750	3.812	4.315	0.688	1.375	1.719	5.000	7.890
3.000	3.250	4.000	4.062	4.440	0.688	1.438	1.719	5.125	8.015
3.125	3.375	4.125	4.188	4.565	0.688	1.438	1.719	5.250	8.140
3.250	3.500	4.250	4.312	4.690	0.688	1.562	1.719	5.375	8.265
3.375	3.625	4.375	4.438	4.815	0.812	1.562	1.719	5.500	8.375
3.500	3.750	4.500	4.562	4.940	0.812	1.562	1.719	5.625	8.500
3.625	3.875	4.625	4.688	5.065	0.812	1.562	1.719	5.750	8.625
3.750	4.000	4.750	4.812	5.190	0.812	1.562	1.719	5.875	8.750

SIZE RANGE: The UltraSeal 151 is available in shaft sizes from 1" to 3 3/4". Odd sizes and metric units are available upon request.

WARRANTY

PPC seals and seal parts are guaranteed to be free from defects in material and workmanship and are guaranteed to render satisfactory service when used for the purpose for which they are designed.



BATON ROUGE
 P.O. Box 52915 • 2769 Mission Drive
 Baton Rouge, LA 70805
 225-356-4333 • FAX 225-355-2126
 1-800-731-7325

MOBILE SERVICE CENTER
 707 Goldenrod Avenue
 Salarand, AL 36571
 334-679-0971 • FAX 334-679-0975